



ECO Spot™ C20PCE

ECO Spot™ C20PCE LED Gobo Projector

Weather and Dustproof Projector for Rugged Environments

- **Passive cooling** - no moving parts such as fans or motors
- **Applications** - dusty and wet industrial environments
- **Interchangeable Projection Lenses** - for a wide range of projection distances and sizes



SPECIFICATIONS

Item Code:	ES-C20PCE
Power Supply:	100-277V, 50/60Hz
Power Draw:	20W, 0.17A/115V, 0.08A/277V
Driver:	Mean Well LPF-25-20
Inrush Current:	COLD START 50A (t width=200µs at 50% I peak) at 230VAC per NEMA 410
Breakers:	We recommend lighting specific breakers at 70% of specified load
Units per Breaker:	16A Type C: 21 units, 16A Type B: 12 units
Power Cord:	Length: 8.5' (2.6m), Plug: Standard plug: NEMA 5-15 (other plug options available)

Environmental Rating:	IP65
Safety Standards:	Driver: UL 8750 Standard for LED Equipment, CSA C22.2 No. 250.0-08 Standard for Luminaires
Temperature Range:	-22°F to 122°F (-30°C to 50°C)
LED Life:	35,000 h until 30% brightness loss is reached (L70*) (*L70= the time to 30% brightness loss)
Driver Life:	MTBF: 200,000 h, lifetime: 100,000 h at tc=75°C and 80% load (driver and LED are field serviceable)

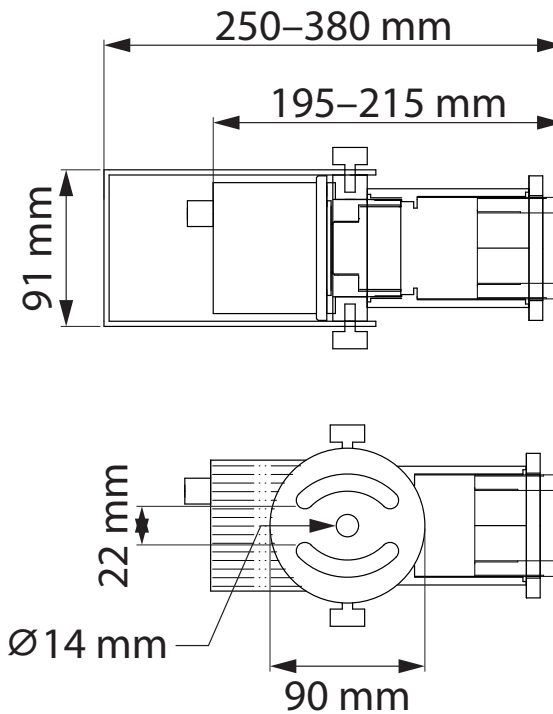
Lamp Type:	LED - 20W		
LED Color Temp:	8,000k ± 500k		
Projection Lenses:	Narrow: f=140 mm/10°	Semi-Narrow: f=100 mm/15°	Medium: f=70 mm/20°
	Wide: f=56 mm/25°	Ultra-Wide: f=28 mm/40°†	
Gobo Size:	E-Size - Outside Diameter: 37.5 mm, Image Diameter: 25 mm (*ID: 23 mm for Ultra-Wide)		

Typ. Projection Range / Size	Bright Environment	Average Env.	Dim Env.
Max. Image Size:	3' (0.9 m)	4.5' (1.4 m)	6' (1.8 m)
At Distance:	16'	22'	30'

Product Warranty:	Two years from date of purchase
-------------------	---------------------------------

DIMENSIONS AND WEIGHT

Dimensions in mm
Weight: 2.3 kg [5 lbs]



PHOTOMETRICS (see our website for metric version and details)

ECO Spot™ Photometrics																									
Model Gobo Size	Gobo max ID	Lens	Beam Mult.	Effective lm	Efficiency lm/W	CD	Value	PROJECTION DISTANCE in (ft)																	
								3	6	9	12	15	20	24	30	36	42	64	88	112	136	200	300		
ES-C20PCE E-Size OD=37.5mm ID=25mm	25mm	140mm (10°)	0.18	641	16	25,200	Size (ft)			1.6	2.2	2.7	3.6	4.3	5.4	6.5	7.6	11.5	15.8	20.2					
							Brightn. (fc)			311	175	112	63	44	28	19	14	6	3	2					
		100mm (15°)	0.26	841	21	15,840	Size (ft)		1.6	2.3	3.1	3.9	5.2	6.2	7.8	9.4	11	17	23	29					
							Brightn. (fc)		440	196	110	70	40	28	18	12	9	4	2	1					
	23mm	70mm (20°)	0.35	692	17	7,200	Size (ft)	1.1	2.1	3.2	4.2	5.3	7.0	8.4	10.5	12.6	14.7	22.4	30.8						
							Brightn. (fc)	800	200	89	50	32	18	13	8	6	4	2	1						
		56mm (25°)	0.45	732	18	4,608	Size (ft)	1.4	2.7	4.1	5.4	6.8	9.0	11	14	16	19	29	40						
							Brightn. (fc)	512	128	57	32	20	12	8	5	4	3	1	1						
	28mm* (40°)	0.85	817	20	1,440	Size (ft)	2.6	5.1	7.7	10.2	12.8	17.0	20.4	25.5	30.6	35.7	*For best focus/brightness, max. ID=23mm								
						Brightn. (fc)	160	40	18	10	6	4	3	2	1	1									
ECO Spot is a Trademark of Globus New Media LLC dba GoboSource																									
Metric Conversions: For Meters multiply feet by .305. For Lux multiply footcandles by 10.76																									
Projection Size Calculation		For the resulting Projection Size at any given Distance, Multiply the number in the "Beam Mult." column with your Projection Distance.												Projection Size = Distance x Beam Mult.											
		For the Distance needed to achieve a desired Projection Size, Divide the Projection size by the Beam Multiplier.												Distance = Projection Size / Beam Mult.											
		How to Read the Illumination Values												700+	180-700	90-180	60-90	40-60							
		Lighting environment description												Extreme bright	Very bright	Standard	Moderate	Dim							