

# ECO Spot C25+ LED Gobo Projector

**Compact LED Gobo Projector for mid level Brightness and Image sizes.**

- Strongest compact ECO Spot model.
- Interchangeable projection lenses for a wide range of applications.
- Takes metal and glass gobos up to full color and film gobos for limited run time.
- Integrated, switchable gobo rotator.
- Dimmable with manual dial.
- Compact, full aluminum housing.
- Wide power range.



## SPECIFICATIONS:

<b>Item Number:</b>	ES-C25+
<b>Line Voltage:</b>	100-240V, 277V, 50-60Hz, 30W
<b>Dimmable:</b>	Yes, using backplate control functions

<b>Lamp Type:</b>	LED 24W
<b>Rated Bulb Life:</b>	40,000 Hours
<b>Color Temperature (Kelvin):</b>	6,000k +/-500k
<b>Effective Luminous Flux:</b>	1,900lm (LED rated 2,400lm)

<b>Available Projection Lenses:</b>	Narrow: f=140mm/10°, Semi-Narrow: f=100mm/15°, Medium: f=70mm/20°, Wide: f=50mm/25°, Ultra Wide f=28mm/45° (max. Gobo ID: 25mm)
-------------------------------------	---

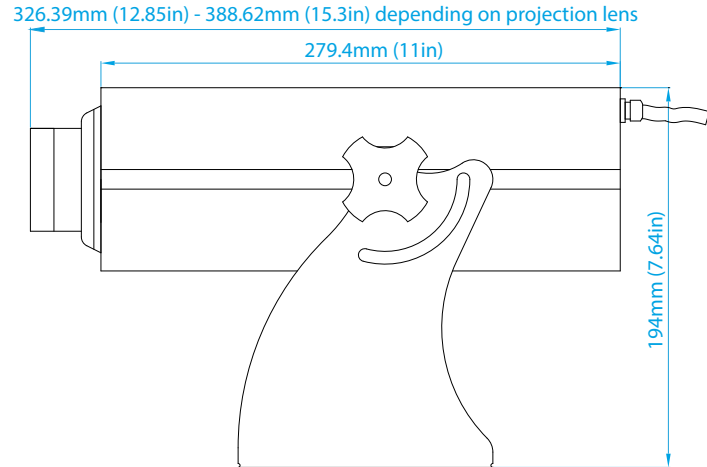
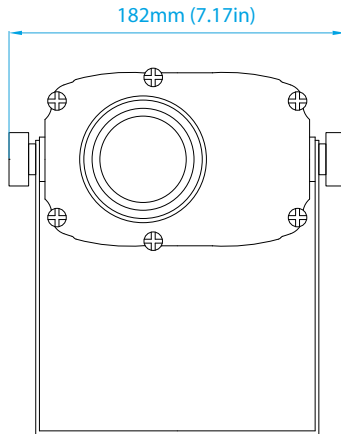
<b>Gobo Dimensions:</b> ID=Image Diameter OD=Outer Diameter	E-Size OD37.5mm, ID27mm
<b>Recommended max. ID:</b>	text ID25mm / standard ID27mm / patterns ID32mm
<b>Gobo Types:</b>	Glass or Metal, film gobos with limited run time

**Projection Range** (typical range with narrow lens):

<b>Bright Environment:</b>	- up to 30ft
<b>Dim environment:</b>	- up to 60ft
<b>Dark environment:</b>	- up to 140ft

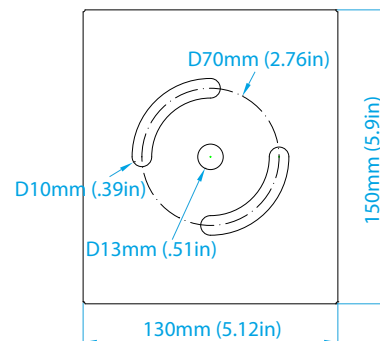


# ECO Spot C25+ LED Gobo Projector



## Typ. total length including the projection lens:

- Narrow:  $f=140\text{mm}/10^\circ$ : 388.62mm (15.3in)
- Semi-Narrow:  $f=100\text{mm}/15^\circ$ : 368.30mm (14.5in)
- Medium:  $f=70\text{mm}/20^\circ$ : 326.39mm (12.8in)
- Wide:  $f=50\text{mm}/25^\circ$ : 326.39mm (12.8in)
- Ultra Wide:  $f=28\text{mm}/45^\circ$ : 347.98mm (13.7in)



**Projector Weight: 7lbs**

ECO Spot™ Photometrics																								
Model Gobo Size	Gobo max ID	Lens	Beam Mult.	Effective Lumens	Value	3	6	9	12	15	20	24	30	36	42	64	88	112	136	200	300			
ES-C25 ES-C25E ES-C25+	25mm	140mm (10")	0.18	842	Size (ft) Brightn. (fc)				1.6 409	2.2 230	2.7 147	3.6 83	4.3 58	5.4 37	6.5 26	7.6 19	11.5 8	15.8 4	20.2 3	24.5 2				
		100mm (15")	0.26	993	Size (ft) Brightn. (fc)		1.6 520	2.3 231	3.1 130	3.9 83	5.2 47	6.2 33	7.8 21	9.4 14	11 11	17 5	23 2							
		70mm (20")	0.35	831	Size (ft) Brightn. (fc)	1.1 960	2.1 240	3.2 107	4.2 60	5.3 38	7.0 22	8.4 15	11 10	13 7	15 5	22 2								
		56mm (25")	0.45	1030	Size (ft) Brightn. (fc)	1.4 720	2.7 180	4.1 80	5.4 45	6.8 29	9.0 16	11 11	14 7	16 5	19 4	29 2								
E-Size OD=37.5mm ID=25mm	23mm	28mm* (40")	0.85	1143	Size (ft) Brightn. (fc)	2.6 224	5.1 56	7.7 25	10.2 14	12.8 9	17.0 5	20.4 4	25.5 2	30.6 2	*For best focus/brightness, max. ID=23mm									
ECO Spot is a Trademark of Globus New Media LLC dba Gobosource										Copyright ©2019 GoboSource® V20181227														
How to Read the Illumination Values																								
Foot Candles (ft)	For a quick overview, the illumination values in the tables are color coded. There are many factors that determine the visibility of a projection, such as ambient light, color and reflectiveness of the projection surface, competing light, gobo colors, projector color temperature, and other factors. Therefore our recommendations should only be used as guidelines and we cannot guarantee a successful application. If you are unsure, please call us to discuss.																							
Projection Size Calculation	For the resulting Projection Size at any given Distance, Multiply the number in the "Beam Mult." column with your Projection Distance. For the Distance needed to achieve a desired Projection Size, Divide the Projection size by the Beam Multiplier.																					Projection Size = Distance x Beam Mult. Distance = Projection Size / Beam Mult.		
300+	Extreme brightness for extremely bright environments, i.e. bright areas, additionally flooded with daylight, such as Lobby-, Retail-, Trade Show-, Environment. Outdoors (shady, no direct sunlight).																							
150-300	Very high brightness for very bright environments, such as light flooded Office-, Lobby-, Retail-, Trade Show-, Environment. Color gobos project in vibrant colors. Outdoors well visible at night with vibrant colors.																							
45-150	The most common brightness bracket for bright environments, such as Office, Lobby, Retail, Tradeshow. Outdoors extremely bright at night. Color gobos project well.																							
15-45	Sufficient brightness for environments, such as Bars, Clubs, and Intimate Restaurants, Theaters, and dimmed Conference rooms. Outdoors well visible at night. Color gobos should preferably be used with lighter colors and the projection surface should be light and somewhat reflective.																							
15-2	Only advisable for dark environments and subtle projection of light colored artwork, preferably on light, reflective projection surface. If all conditions are met, the max. listed image distance/size can be doubled in most cases.																							
Metric Conversions: For Meters multiply feet by .305. For Lux multiply footcandles by 10.76																								

## PACKAGE CONTENTS

Power Cord • Test Gobo • Spare Gobo Retaining Ring • Integrated Gobo Mounts • User Manual

Questions? Call us!

1.800.213.1092

[www.gobosource.com](http://www.gobosource.com)



Copyright © 2020 Globus New Media LLC. Specifications may change at anytime, not liable for errors or omissions

V02052017

4444 Scotts Valley Dr., Suite 5 | Scotts Valley, CA 95066, USA