

ECO Spot LED B150E LED Gobo Projector

Weatherproof Projector for Exterior and Interior Applications

- For very bright environments, large projection sizes and distances.
- Takes std. **M-size gobos**, up to Full Color.
- Integrated **Gobo Rotator** with on/off switch, useful for exact image alignment.
- Interchangeable Projection Lenses.
- Quiet Operation



SPECIFICATIONS:

Order Code:	ES-B150E
Power Supply:	95-265V, 50-60Hz, 220W
Other Build Options:	B150CE: Outdoor version with 4-Gobo Changer B150C: Indoor version with 4-Gobo Changer B150: Indoor version with Gobo Rotator ES-B150PCE: Rugged Fanless Exterior Version

Lamp Type:	LED
Rated Life:	35,000 hours
Color Temperature:	6,000k +/-500k
Luminous Flux:	7,200lm (effective flux 6,300lm)

Projection Lenses:	Semi-Narrow: f=210mm/13° Medium: f=140mm/20 Semi-Wide: f=115mm/25 Wide: f=87mm/30
Gobo Dimensions:	M-Size (OD66mm, ID48mm), max. thickness: 5mm
Gobo Types:	Glass and Metal, NO film material

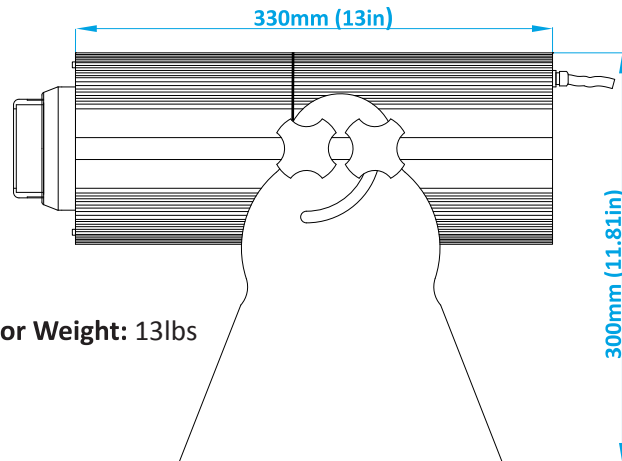
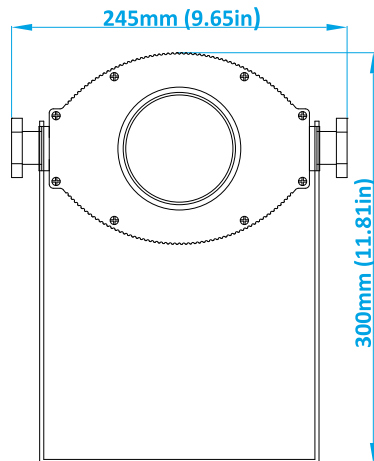
PROJECTION RANGE

Bright environment:	- up to 70ft
Dim environment:	- up to 150ft
Dark environment:	- up to 300ft (or more in very dark conditions)

SAFETY STANDARDS

Projector:	IP62 (self rated), no certifications. The projector is not connected to line voltage, it receives low DC voltage through the driver.
External Driver:	IP65, UL8750(type"HL"), CSA C22.2 No. 250.0-08, ENEC, TUV EN61347-1, EN61347-2-13, J61347-1, J61347-2-13 approved; design refer to UL60950-1, TUV EN60950-1

ECO Spot LED B150E LED Gobo Projector



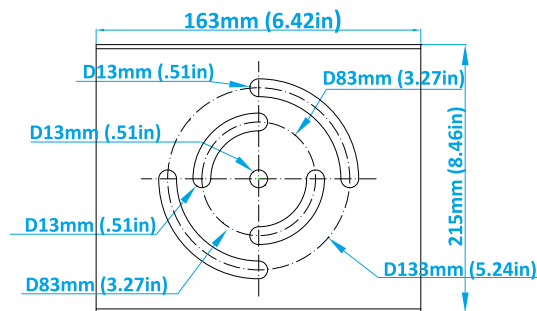
Projector Weight: 13lbs

Max. total length including the projection lens:

- Narrow: f=210mm/13°: 520mm (20.5in)
- Medium: f=140mm/20°: 405mm (16in)
- Semi-Wide: f=115mm/25°: 420mm (16.5in)
- Wide: f=87mm/30°: 420mm (16.5in)

Separate Driver (see driver datasheet for details)

- Dimensions: 220x68x39mm (8.7x2.7x1.5in) (LxWxH)
- Weight: 2lbs



ECO Spot™ Photometrics											ECO Spot is a Trademark of Globus New Media LLC dba Gobosource																																																																																																																																																																																																																																																																																																																																																																																																																																																																																																																																																																																																																																																																																																																																																																																																																																																																																																																																																																																																																																																																																																																																																																																																																																																																																																																																			
Model Gobo Size	Color Temp.	Lens	Beam Mult.	Effective Im	CD	eff lm FC@12	ID mm	focal length nominal	focal length calculated	at ft	D=? 15	Value	PROJECTION DISTANCE IN FEET (ft)																																																																																																																																																																																																																																																																																																																																																																																																																																																																																																																																																																																																																																																																																																																																																																																																																																																																																																																																																																																																																																																																																																																																																																																																																																																																																																																																	
ES-B150 ES-B150E ES-B150C ES-B150CE ES-B150PCE	6000k +/- 500k	210mm (13°)	0.25	8124	165,600	8124 1150	48		192		3.8 736	Size (ft) Brightn. (fc)																																																																																																																																																																																																																																																																																																																																																																																																																																																																																																																																																																																																																																																																																																																																																																																																																																																																																																																																																																																																																																																																																																																																																																																																																																																																																																																																		

PACKAGE CONTENTS

Power Cord • Test Gobo • Spare Gobo Retaining Ring • Integrated Gobo Mounts • User Manual

Questions? Call us!
1-831-431-8800

www.gobosource.com

Copyright ©2016 Globus New Media LLC. Specifications may change at any time, not liable for errors or omissions.

V15042016