

ECO Spot LED B90E LED Gobo Projector

Weatherproof Projector for Exterior and Interior Applications

- For bright environments, large projection sizes and distances.
- Interchangeable Projection Lenses.
- Quiet Operation
- Integrated **Gobo Rotator** with on/off switch, useful for exact image alignment.
- Takes std. **M-size gobos**, up to Full Color, plus Film materials.



SPECIFICATIONS:

Order Code:	ES-B90E
Power Supply:	95-265V, 50-60Hz, 120W
Other Build Options:	B90CE: Outdoor version with 4-Gobo Changer B90C: Indoor version with 4-Gobo Changer B90: Indoor version with Gobo Rotator ES-B90PCE: Rugged w/ Passive Cooling

Lamp Type:	LED
Rated Life:	35,000 hours
Color Temperature:	6,000k +/-500k
Luminous Flux:	7,200lm (effective flux 6,300lm)

Projection Lenses:	Semi-Narrow: f=210mm/13° Medium: f=140mm/20° Semi-Wide: f=115mm/25° Wide: f=87mm/30°
Gobo Dimensions:	M-Size (OD66mm, ID48mm), max. thickness: 5mm
Gobo Types:	Glass, metal, (film for a few hours max.)

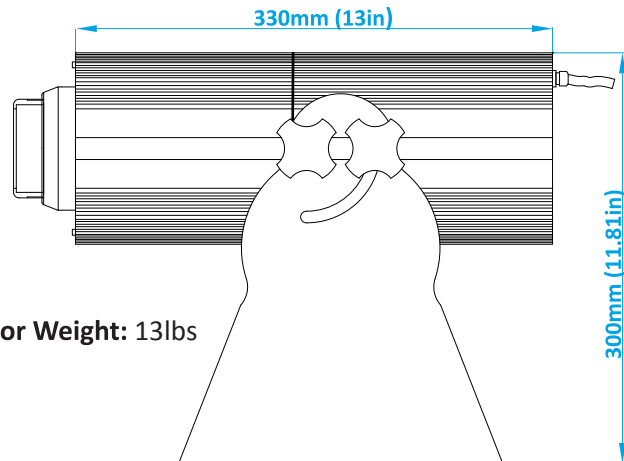
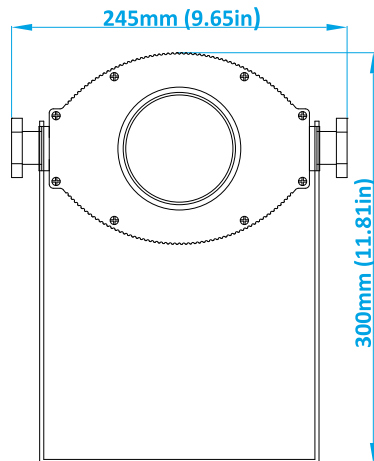
PROJECTION RANGE

Bright environment:	- up to 50ft
Dim environment:	- up to 100ft
Dark environment:	- up to 250ft (or more in very dark conditions)

SAFETY STANDARDS

Projector:	IP62 (self rated), no certifications. The projector is not connected to line voltage, it receives low DC voltage through the driver.
External Driver:	IP65, UL8750(type"HL"), CSA C22.2 No. 250.0-08, ENEC, TUV EN61347-1, EN61347-2-13, J61347-1, J61347-2-13 approved; design refer to UL60950-1, TUV EN60950-1

ECO Spot LED B90E LED Gobo Projector



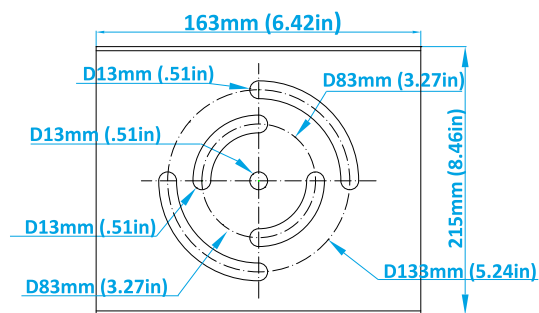
Projector Weight: 13lbs

Max. total length including the projection lens:


- Narrow: f=210mm/13°: 520mm (20.5in)
- Medium: f=140mm/20°: 405mm (16in)
- Semi-Wide: f=115mm/25°: 420mm (16.5in)
- Wide: f=87mm/30°: 420mm (16.5in)

Separate Driver (see driver datasheet for details)

- Dimensions: 220x68x39mm (8.7x2.7x1.5in) (LxWxH)
- Weight: 2lbs



ECO Spot™ Photometrics						ECO Spot is a Trademark of Globus New Media LLC dba Gobosource																	
Model Gobo Size	Color Temp.	Lens	Beam Mult.	Effective lm	CD	Value	PROJECTION DISTANCE IN FEET (ft)																
							3	6	9	12	15	18	24	30	36	42	64	88	112	136	200	250	
ES-B90 ES-B90E ES-B90C ES-B90CE	6000k +/- 500k	200mm (15°)	0.25	6217	126,720	Size (ft)			2.3	3.0	3.8	4.5	6.0	7.5	9.0	10.5	16.0	22.0	28.0	34.0	50.0		
						Brightness (fc)			1564	880	563	391	220	141	98	72	31	16	10	7	3		
		140mm (20°)	0.35	6300	65,520	Size (ft)		2.1	3.2	4.2	5.3	6.3	8.4	11	13	15	22	31	39	48			
						Brightness (fc)		1820	809	455	291	202	114	73	51	37	16	8	5	4			
M-Size ID=48mm		115mm (25°)	0.42	5700	41,760	Size (ft)		2.5	3.8	5.0	6.3	7.5	10.0	13	15	18	27	37	47				
						Brightness (fc)		1160	516	290	186	129	73	46	32	24	10	5	3				
		87mm (30°)	0.55	4445	18,720	Size (ft)		3.3	5.0	6.6	8.3	9.9	13.2	17	20	23	35	48					
						Brightness (fc)		520	231	130	83	58	33	21	14	11	5	2					



GoboSource
Custom Gobos and Projection Solutions

ECO Spot is a Trademark of Globus New Media LLC dba Gobosource

Copyright ©2016 Gobosource™

How to Read the Illumination Values

Foot Candles (ft)	For a quick overview, the illumination values in the tables are color coded. There are many factors that determine the visibility of a projection, such as ambient light, color and reflectiveness of the projection surface, competing light, gobo colors, projector color temperature, and other factors. Therefore our recommendations should only be used as guidelines and we cannot guarantee a successful application. If you are unsure, please call us to discuss.
Projection Size Calculation	For the resulting Projection Size at any given Distance, Multiply the number in the "Beam Mult." column with your Projection Distance. Projection Size = Distance x Beam Mult. For the Distance needed to achieve a desired Projection Size, Divide the Projection size by the Beam Multiplier. Distance = Projection Size / Beam Mult.
300+	Extreme brightness for extremely bright environments, i.e. bright areas, additionally flooded with daylight, such as Lobby-, Retail-, Trade Show-, Environment. Outdoors (shady, no direct sunlight). Color gobos project in vibrant colors.
45-300	Very high brightness for very bright environments, such as Office-, Lobby-, Retail-, Trade Show-, Environment. Color gobos project in vibrant colors. Outdoors well visible at night with vibrant colors.
15-45	Sufficient brightness for regular environments, such as Bars, Clubs, and intimate Restaurants, Theaters, and dimmed Conference rooms. Outdoors well visible at night. Color gobos should preferably be used with lighter colors and the projection surface should be light and somewhat reflective.
15-3	Only advisable for dark environments and subtle projection of light colored artwork, preferably on light, reflective projection surface. If all conditions are met, the max. listed image distance/size can be doubled in most cases.

Metric Conversions: For Meters multiply feet by .3048. For Lux multiply footcandles by 10.76

PACKAGE CONTENTS

Power Cord • Test Gobo • Spare Gobo Retaining Ring • Integrated Gobo Mounts • User Manual

Questions? Call us!
1-831-431-8800

www.gobosource.com

Copyright ©2016 Globus New Media LLC. Specifications may change at any time, not liable for errors or omissions.

V15042016



4444 Scotts Valley Dr., Suite 5 | Scotts Valley, CA 95066, USA