

## ECO Lines 80 LED Line Projector

Projects a thick, permanent floor line that eliminates the need for maintenance required by floor tape and paint lines.

- Designed for Industrial Environments
- Wide power range
- Wide temperature range
- Maintenance free, no fans or motors
- Adjustable line length option



### SPECIFICATIONS

Item Codes:	EL-80Y (yellow), EL-80G (green), EL-80B (blue), EL-80R (red), EL-80O (orange)
Power Supply:	100-240/277VAC, 50/60Hz (Voltage Range: 90-305VAC, 48-63Hz; 127-431VDC)
Power Draw:	80W, 0.7A/115V, 0.3/277V
Inrush Current:	COLD START 75A (t width=570µs at 50% I peak) at 230VAC per NEMA 410
Units per Breaker:	20A Type C: 11 units, 16A Type C: 9 units
Power Cord:	Length: 72" (1.8m), Plug: Nema 5-15 (cord is interchangeable)
Control Input Signals:	1-10V, 10-100KOhm, PWM, Dry Switch (for on/off or dimming)

Environmental Rating:	Driver: IP67, Projector: IP65
Safety Standards:	EC: EN IEC 60598-1:2021, N IEC 60598-2-1:2021, Driver: UL E334687
Driver:	Meanwell HLG or MOSO
Temperature Range:	-13°F to 104°F (-25°C to 50°C)

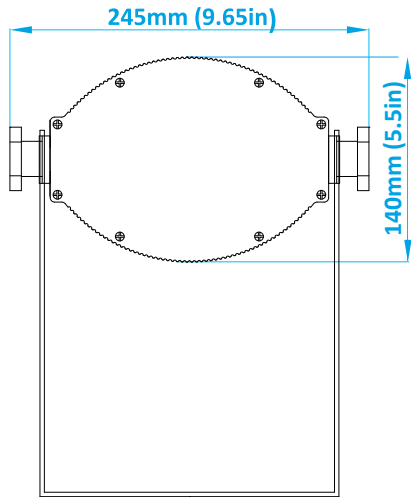
Lamp Type:	LED, multiple colors
Rated Life:	LED: 35,000h (L70*), Driver: 192,000h (both are field serviceable) (*L70= the time to 30% brightness loss)

Projection Colors:	Yellow, Green, Red, Blue, Orange (colors are pre-configured and not interchangeable)		
Line Width:	3 to 5" (75 to 125mm) depending on projection distance		
Projection Lenses:	53° (1:0.93 throw ratio)	73° (1:1.4 throw ratio)	90° (1:1.86 throw ratio)

Typ. Projection Range / Size	Bright Environment	Average Env.	Dim Env.
Typ. Usable Line Length:	28' (8.5m)	36' (11m)	60' (18m)
At typ. Distance (dep. on lens):	15/20/15' (4.6/6.3/9m)	19/26/39' (6/10/12m)	32/43/64' (9.7/13/19m)
Line Length Adjustment:	Yes, with optional blinders (the min. length is approx. 30% of the full line length)		

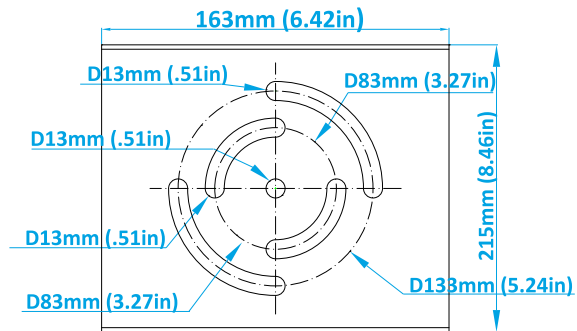
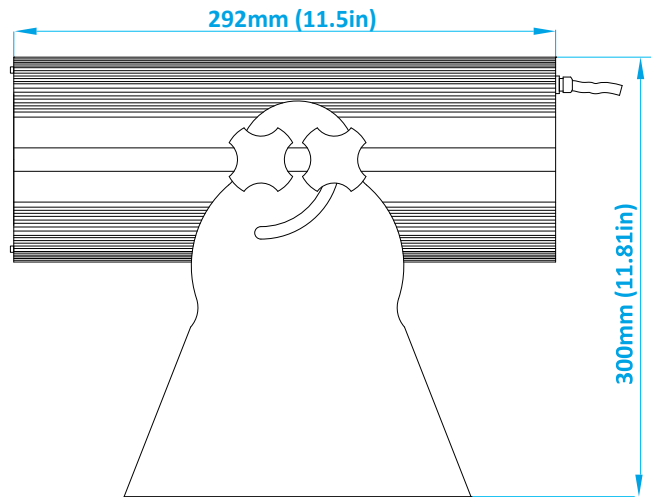
Product Warranty:	Two years from date of purchase
-------------------	---------------------------------

## DIMENSIONS AND WEIGHT



Overall Dimensions:  
Length: 292mm (11.5in)  
Width: 246mm (9.7in)

Weight: 5.3kg (11lbs)



## PHOTOMETRICS

ECO Lines™ Photometrics														
Model Gobo Size	Lens	Beam Mult.	Value	PROJECTION DISTANCE IN FEET (ft)										
				9	12	15	20	24	30	36	39	46	52	60
ECO Lines 80 Yellow and Green	53°	0.93	Size (ft)	8.4	11.2	14.0	18.6	22.3	27.9	33.5	36	43	48	56
			Brightn.(fc)	944	531	340	191	133	85	59	50	36	28	21
	73°	1.40	Length (ft)	12.6	16.8	21.0	28.0	33.6	42.0	50.4	54.6	64.4	72.8	84.0
			Brightn.(fc)	667	375	240	135	94	60	42	36	26	20	15
	90°	1.86	Length (ft)	16.7	22.3	27.9	37.2	45	56	67	73	86	97	112
			Brightn.(fc)	556	313	200	113	78	50	35	30	21	17	13
ECO Lines 150 Yellow and Green	53°	0.93	Size (ft)	8.4	11.2	14.0	18.6	22.3	27.9	33.5	36	43	48	56
			Brightn.(fc)	1667	938	600	338	234	150	104	89	64	50	38
	73°	1.40	Size (ft)	12.6	16.8	21.0	28.0	33.6	42.0	50.4	54.6	64.4	72.8	84.0
			Brightn.(fc)	1333	750	480	270	188	120	83	71	51	40	30
	90°	1.86	Size (ft)	16.7	22.3	27.9	37.2	45	56	67	73	86	97	112
			Brightn.(fc)	1167	656	420	236	164	105	73	62	45	35	26

© 2023 Gobosource. Gobosource is a Registered Trademark of Globus New Media LLC

### How to Read the Illumination Values

700+	Extreme brightness for extremely bright environments, extremely bright production environments (no direct sunlight).
180-700	Very high brightness for very bright environments, such as very bright production floor.
90-180	The most common brightness bracket for regular production floors and modern warehouses.
60-90	Sufficient brightness for bright and medium bright warehouses.
40-60	Sufficient brightness for dim warehouses and facilities.

Metric Conversions: For Meters multiply feet by .305. For Lux multiply footcandles by 10.76

Questions? 1-831-431-8800 - [www.gobosource.com/signs](http://www.gobosource.com/signs)