

# Tuning the Source Four

## Create hard edge

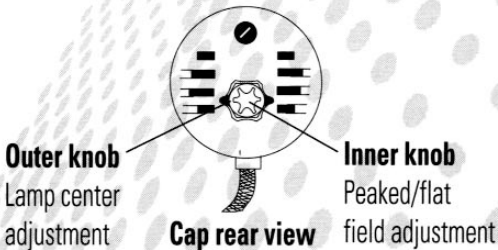
Adjust barrel.

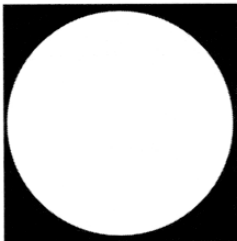
## Center hot spot

Rotate outer knob clockwise until knob is tight.  
Loosen knob until hot spot is centered in field.

## Flatten field

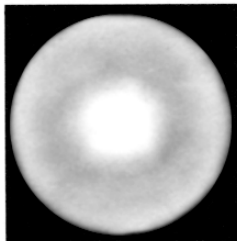
Rotate inner knob. A hot spot or hole appears in the field if the field is not aligned correctly.





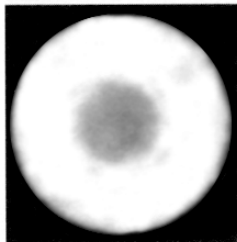
## **Flat Field**

*(Best alignment)*



## **Hot Spot**

*(Lamp pulled out too far)*



## **Field with hole**

*(Lamp pushed in too far)*



**International** • 3030 Laura Lane, P.O. Box 620979, Middleton, WI 53562-0979  
Tel: (+1) 608 831 4116 • Fax: (+1) 608 836 1736 • Toll free: 800 688 4116  
Toll free fax: 800 555 8912

**Europe** • 5 Victoria Industrial Estate, Victoria Road, London W3 6UU  
Tel: +44 (0)20 8896 1000 • Fax: +44 (0)20 8896 2000

**Asia** • Room 605-606, Tower III Enterprise Square • 9 Sheung Yuet Road,  
Kowloon Bay • Kowloon, Hong Kong • Tel: (+852) 2799 1220 • Fax: (+852) 2799 9325

**Web:** [www.etconnect.com](http://www.etconnect.com) • **Email:** [mail@etconnect.com](mailto:mail@etconnect.com)